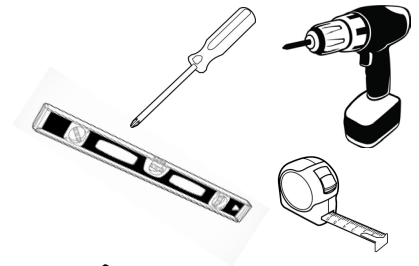


# Installing Your Metal Framed Mirror

## Tools Required

- Tape Measure
- Drill
- Phillips head screwdriver
- Level



## Step One

Inspect frame and mirror for any damages or manufacturer defects.

## Step Two

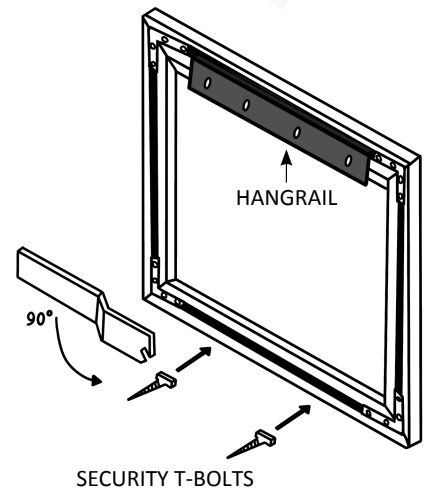
Locate hanging hardware (packaged separately)  
It should include:

- 1 hangrail
- 2 T-Bolts with wall anchors
- 1 security wrench (1 wrench per order)

## Step Three

For best results, always install hangrail into one or more wall studs. When a stud is not available, use wall anchors (not provided).

Level and install hangrail(s) at the desired height, with the screw holes facing downward. Use wall anchors (not provided), if necessary.



## Step Four

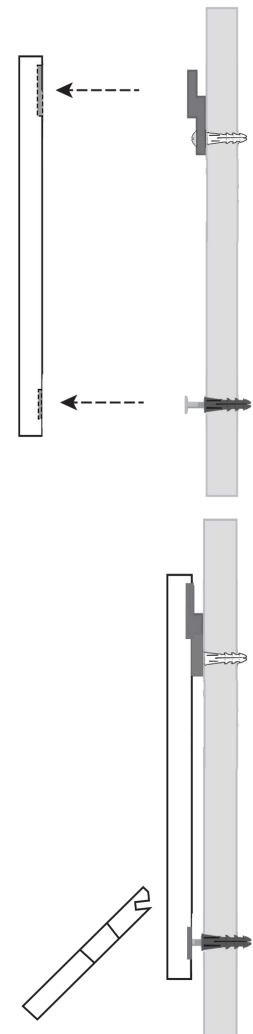
Hang the frame onto the wall by hooking the hangrail into the back channel of the metal frame top piece.

## Step Five

With the frame hanging on the wall and level, measure approx 5/16" up from the bottom of the frame, and, if possible, try to locate at least one stud to help support the weight.

Mark the location.

Temporarily remove the frame and set aside.



## Step Six

Drill 1/4" hole and install the included blue wall anchors for the security T-Bolts. Insert the T-Bolt into the wall anchor, leaving the head approximately 3/8" from the wall and in a horizontal position. There should be no thread visible.

## Step Seven

Hang the frame back on to the hangrail, allowing the T-Bolts to enter the back of the bottom channel. Using the security wrench (provided), reach behind the frame and locate the T-Bolt. Turn the bolt 90-degrees, locking the frame onto the wall, ensuring that the bottom of the framed mirror is supported.

***\*Precision Frameworks recommends installing 2ea T-Bolts (with at least one installed into a stud), where it is possible to do so. Failure to follow these above instructions, may result in the warranty becoming void.***