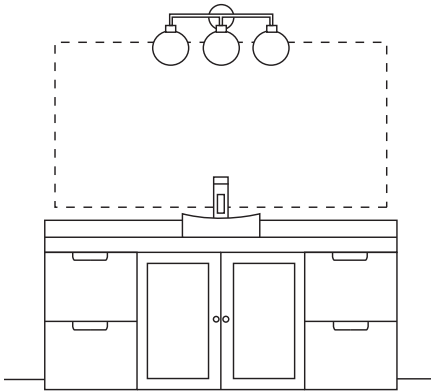


Classic Series and Value Series Frames can transform any living space where a new mirror is to be installed.

Follow these 3 easy steps to ensure the perfect size:

- 1.** Determine the wall area to locate the new framed mirror.



- 2.** Check for obstacles or obstructions the installed framed mirror may encounter.

These may include:

- Light fixtures
- Faucets
- Outlets
- Medicine cabinets
- Towel bars

Thinner frame profiles may be required or the frame location adjusted to ensure proper installation.

- 3.** Determine the finished outside dimension of the Classic or Value Series frame to order.

Helpful tips:

For a single framed mirror centered above the vanity, deducting 2" - 4" from the vanity width provides the best appearance.

Double sink vanities often look best with two mirrors centered above each sink.

Common outside dimensions are 24" - 28" wide by 36" - 42" high.

Most framed mirrors look best when mounted 2" - 4" above the backsplash with the top edge at least 2" below the bottom of the light fixture.

Common custom framed mirror heights range between 36" - 48".

Framed mirrors wider than 60" should either rest on top of the backsplash or be installed with extra reinforcements to support the mirror's weight.

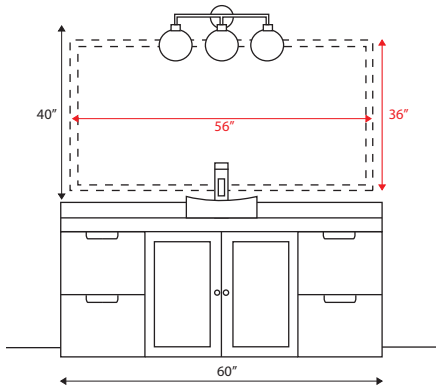
See below examples for determining outside dimensions:

Example A

A 60" wide single vanity top with the bottom of the lighting fixtures mounted 40" above the backsplash.

The most common custom framed mirror size (outside dimension) would be 56" x 36".

This allows the framed mirror to be centered above the vanity with 2" of clearance on all four sides.

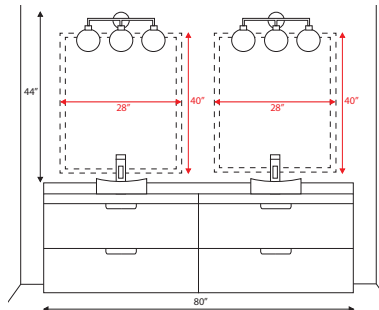


Example B

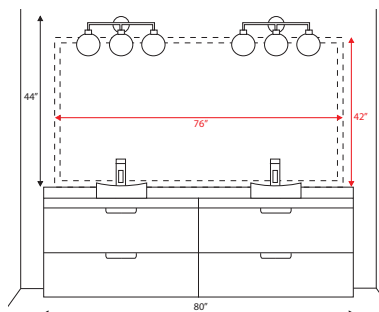
A 80" double vanity top with the bottom of the lighting fixtures mounted 44" above the backsplash.

Common options:

1. Two 28" x 40" framed mirrors center above each sink



2. One 76" x 42" framed mirror resting on the backsplash or 76" x 36" mirror hung 4" above the backsplash with anchoring into as many studs as possible.

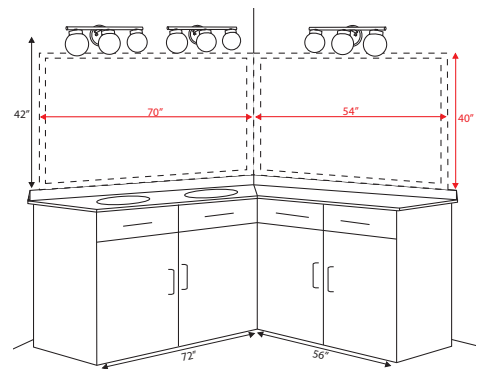


Example C

A L-shaped double vanity with one side 72" wide and the other 56" wide. The bottom of the lighting fixtures are 42" above the backsplash.

Common option:

One 70" x 40" framed mirror and one 54" x 40" framed mirror. Both resting on the backsplash, butting each other in the corner and each about 1" shorter than the outside edge of the vanity top.



Pro Tip:

How to calculate the cut mirror size to insert in back of frame

The easiest way is to assemble the frame kit and take actual measurements inside the notch (or rabbet), leaving about 1/8" - 1/4" clearance to insert the mirror.